

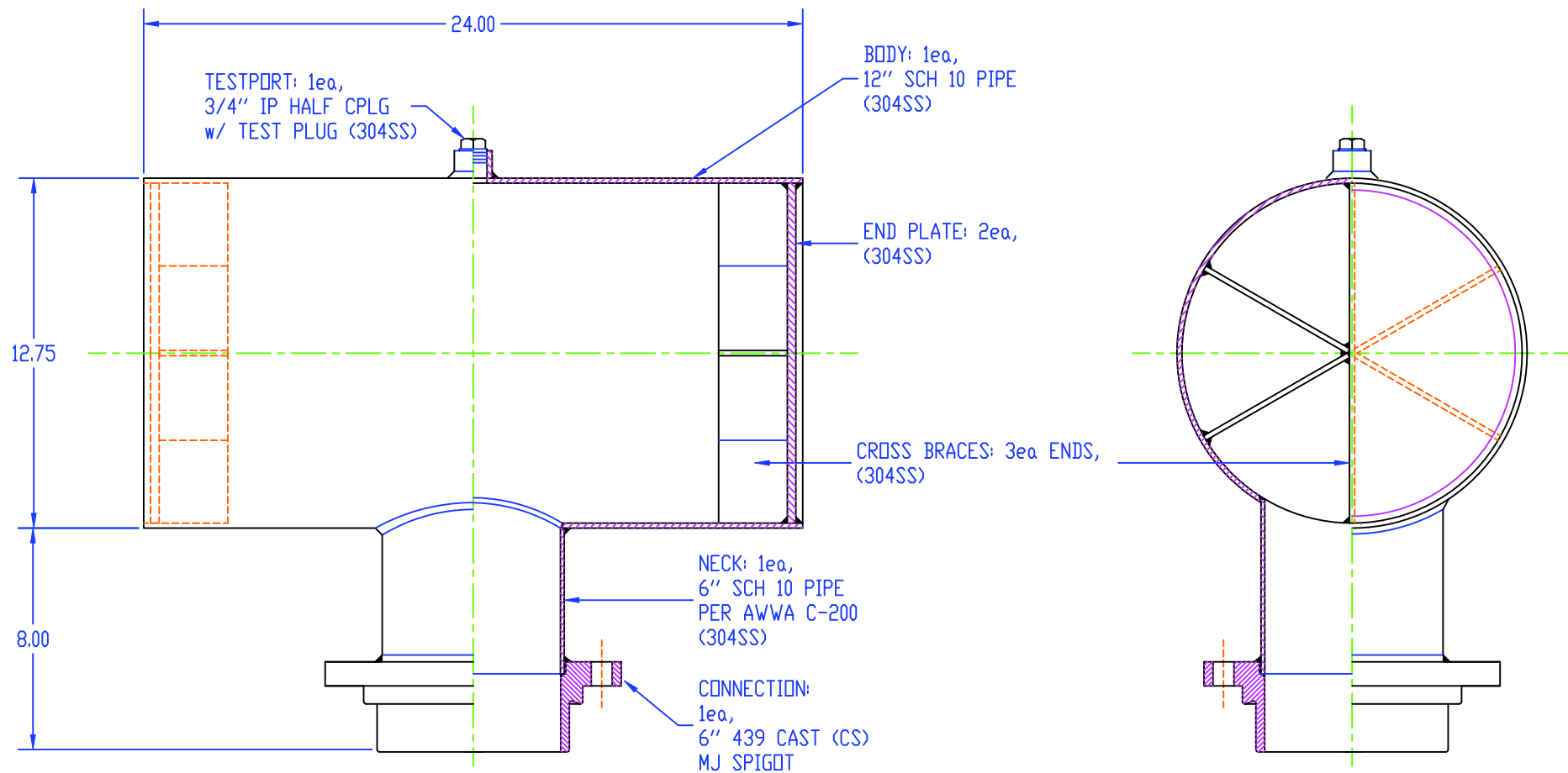
SIDE / SECTION

END / SECTION

THIS DRAWING INCLUDING ALL NOVEL AND PATENTED OR PATENTABLE SUBJECT MATTER EMBODIES CONFIDENTIAL INFORMATION OF JCM INDUSTRIES, INC. AND IS LOANED WITH THE UNDERSTANDING THAT IT WILL NOT BE REPRODUCED NOR BE USED FOR ANY PURPOSE EXCEPT FOR WHICH LOANED UNLESS WRITTEN PERMISSION IS GRANTED BY THE OWNER AND THAT IT SHALL BE RETURNED UPON DEMAND.

- NOTE:
 1) ALL 304SS
 2) NO FASTENERS
 3) ALL WELDS PER AWWA STDS.

				JCM		841-12 X 6 SS			
				JCM INDUSTRIES, INC. NASH, TX.		SURGE SUPPRESSOR			
				P.O. BOX 1220 NASH, TX 75569 www.jcmindustries.com		OFFICE: (903) 832-2581 TOLL FREE: (800) 527-8482 FAX: (800) 874-9524			
				UNLESS OTHERWISE SPECIFIED TOLERANCES TO BE		DRAWN BY HPT		CHECKED BY	
				FRACTIONS DECIMALS ANGLES		DATE 07/16/09		APVD. BY	
				+		ND. SHEETS 1 of 1		SCALE	
								DWG. NO. GEN-005022	
								PART NO.	
								REV. -	
REVISIONS				DATE	S	BY	APVD.		



SIDE / SECTION

END / SECTION

THIS DRAWING INCLUDING ALL NOVEL AND PATENTED OR PATENTABLE SUBJECT MATTER EMBODIES CONFIDENTIAL INFORMATION OF JCM INDUSTRIES, INC. AND IS LOANED WITH THE UNDERSTANDING THAT IT WILL NOT BE REPRODUCED NOR BE USED FOR ANY PURPOSE EXCEPT FOR WHICH LOANED UNLESS WRITTEN PERMISSION IS GRANTED BY THE OWNER AND THAT IT SHALL BE RETURNED UPON DEMAND.

- NOTE:
 1) ALL 304SS;
 EXCEPT CS MJ FLANGE
 3) NO FASTENERS
 4) ALL WELDS PER AWWA STDS.

				JCM		844-12 X 6 CS MJ					
				JCM INDUSTRIES, INC. NASH, TX.		SURGE SUPPRESSOR					
				P.O. BOX 1220 NASH, TX 75569 www.jcmindustries.com		OFFICE: (903) 832-2581 TOLL FREE: (800) 527-8482 FAX: (800) 874-9524		UNLESS OTHERWISE SPECIFIED TOLERANCES TO BE FRACTIONS DECIMALS ANGLES		DRAWN BY HPT DATE 07/16/09	
				APVD. BY		CHECKED BY -----		APVD. BY -----		DWG. NO. GEN-005025	
REVISIONS				DATE		S		BY		SCALE -----	
										1 of 1	
										PART NO. -----	
										REV. -	